

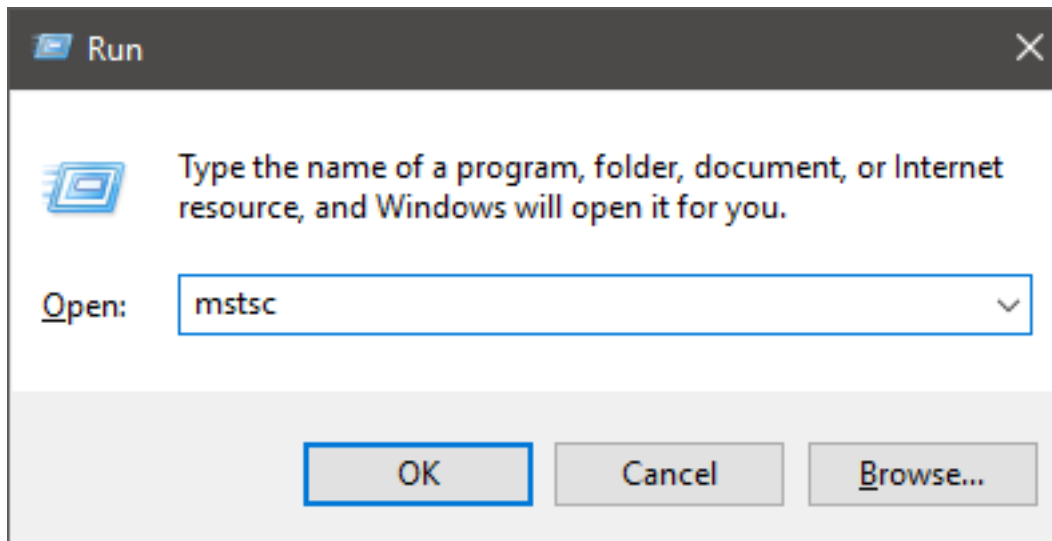
Setting up Remote Desktop using Remote Desktop Gateway



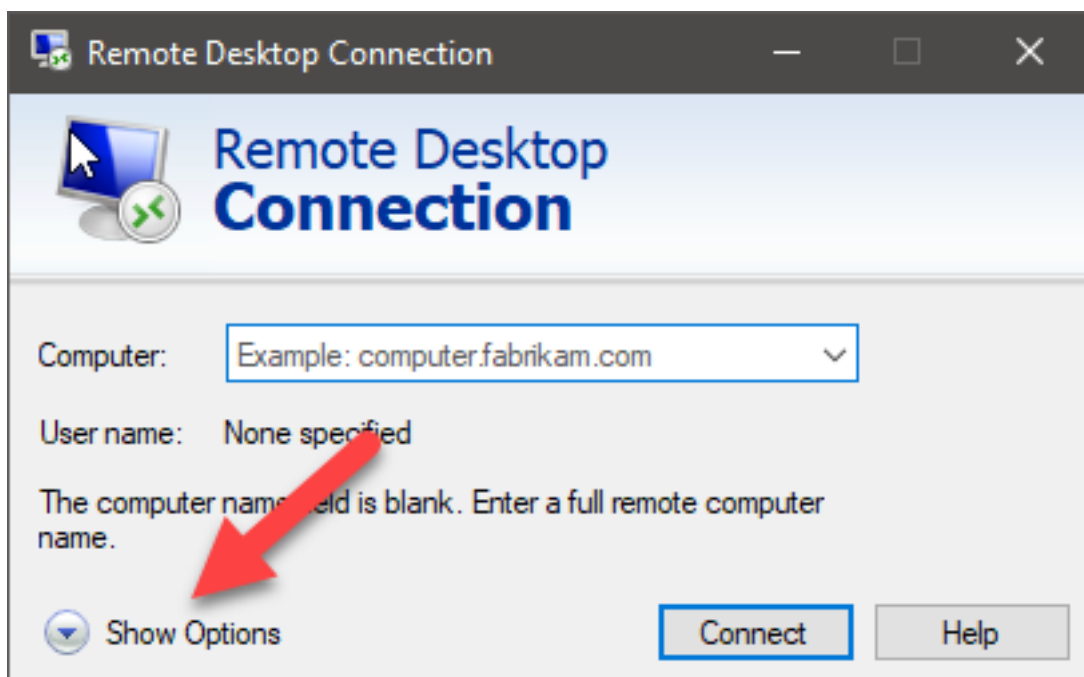
Setting up Remote Desktop using Remote Desktop Gateway

Steps to create connection

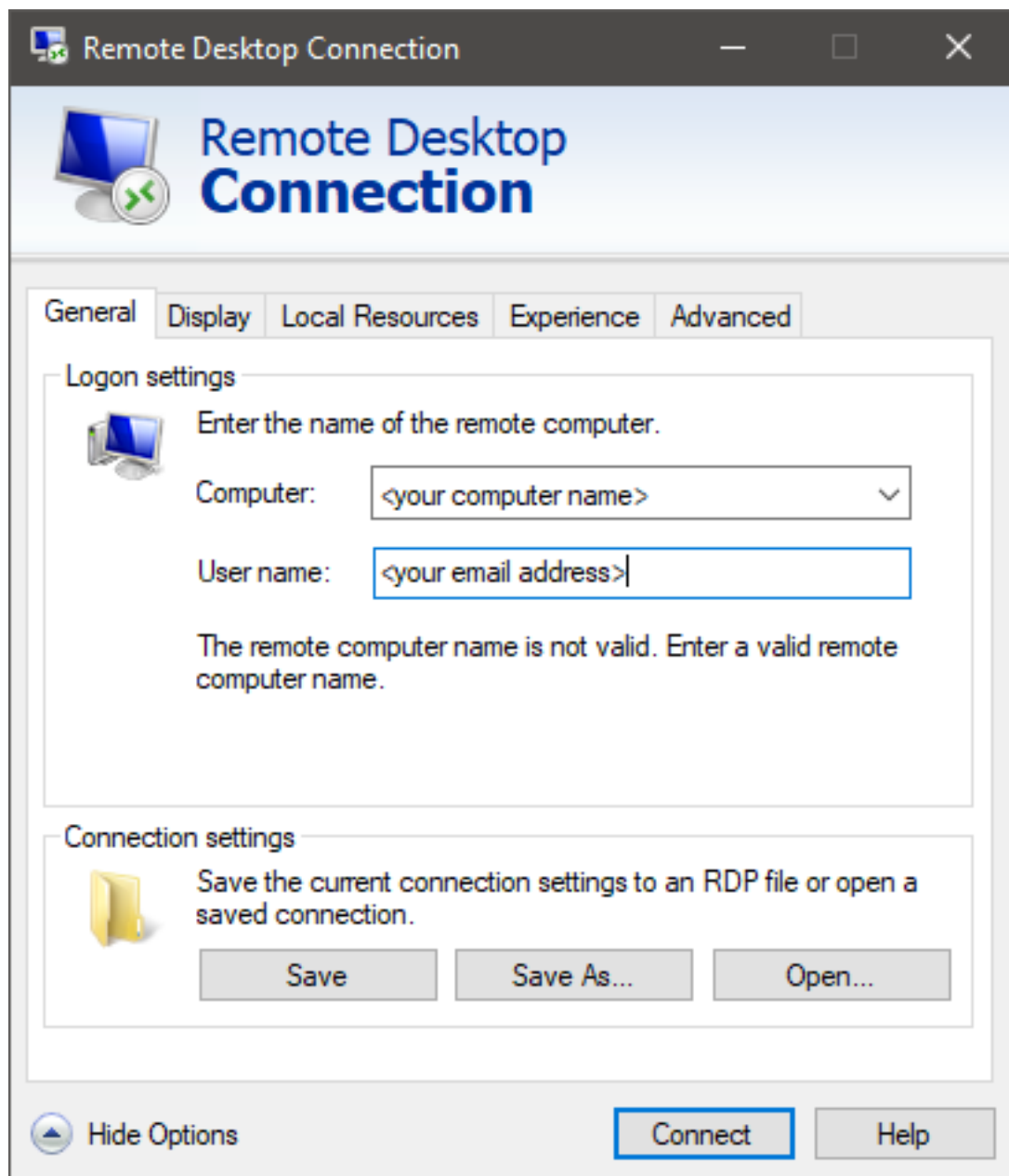
1. Hit the Windows Key + R at the same time to pull up the Run... dialog box. Type in mstsc and press enter



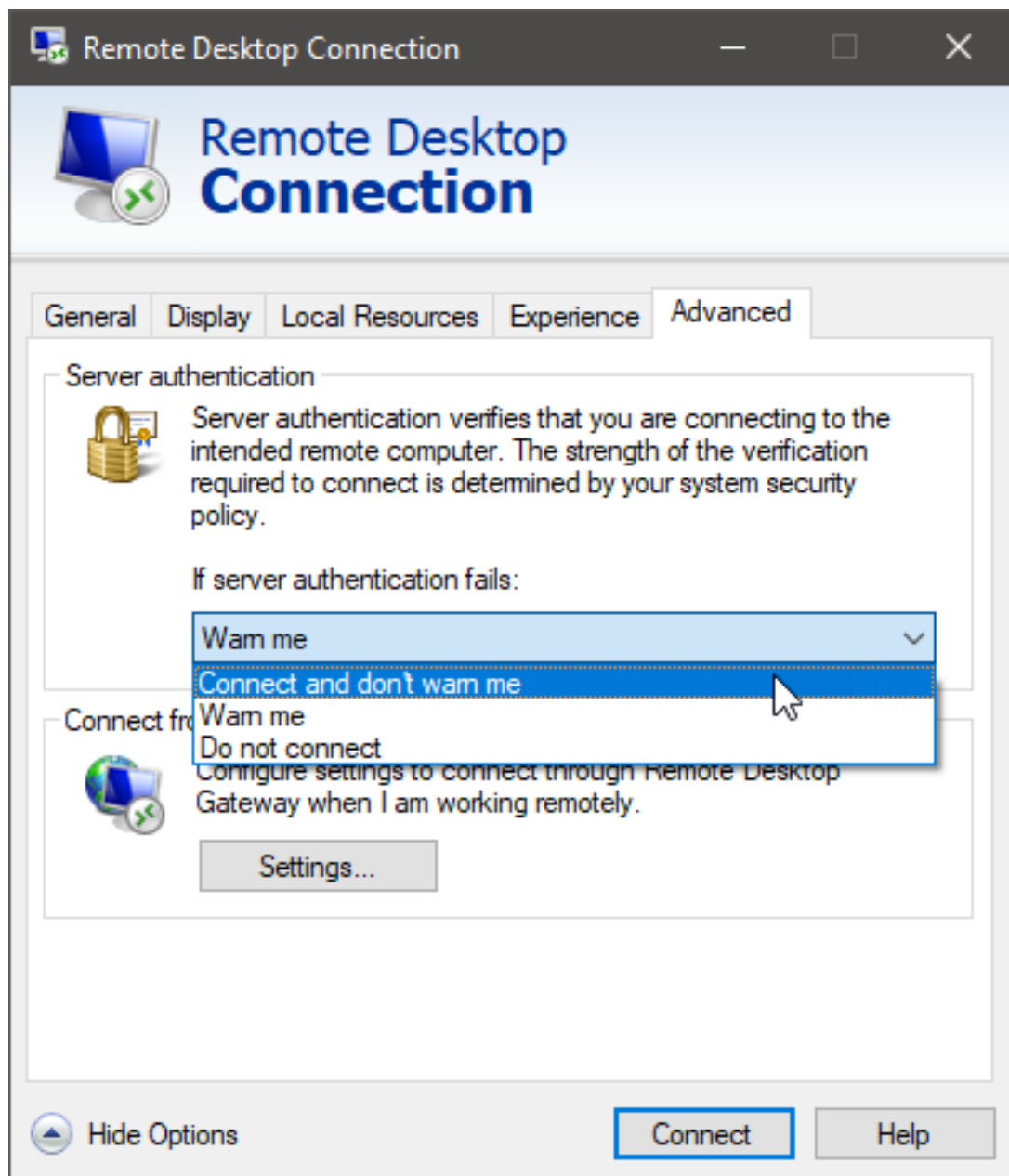
2. Once in Remote Desktop Connection click on “Show Options”



3. Under "Computer" type in the name of your computer
Under User Name type in your email address



4. Under the Advanced tab, change server authentication fails settings to “Connect and Don’t Warn Me” if not already



5. Under the same tab, click on the Settings.. button and enter in the following settings:
1. Choose "Use these RD Gateway server settings"
 2. For Server name: remote..com
 3. Place a checkbox in "Bypass RD Gateway for local addresses" and "Use my RD Gateway credentials for the remote computer"

RD Gateway Server Settings

Remote Desktop Connection

Connection settings

☐ Automatically detect RD Gateway server settings

☒ Use these RD Gateway server settings:

Server name:

Logon method:

☒ Bypass RD Gateway server for local addresses

☐ Do not use an RD Gateway server

Logon settings

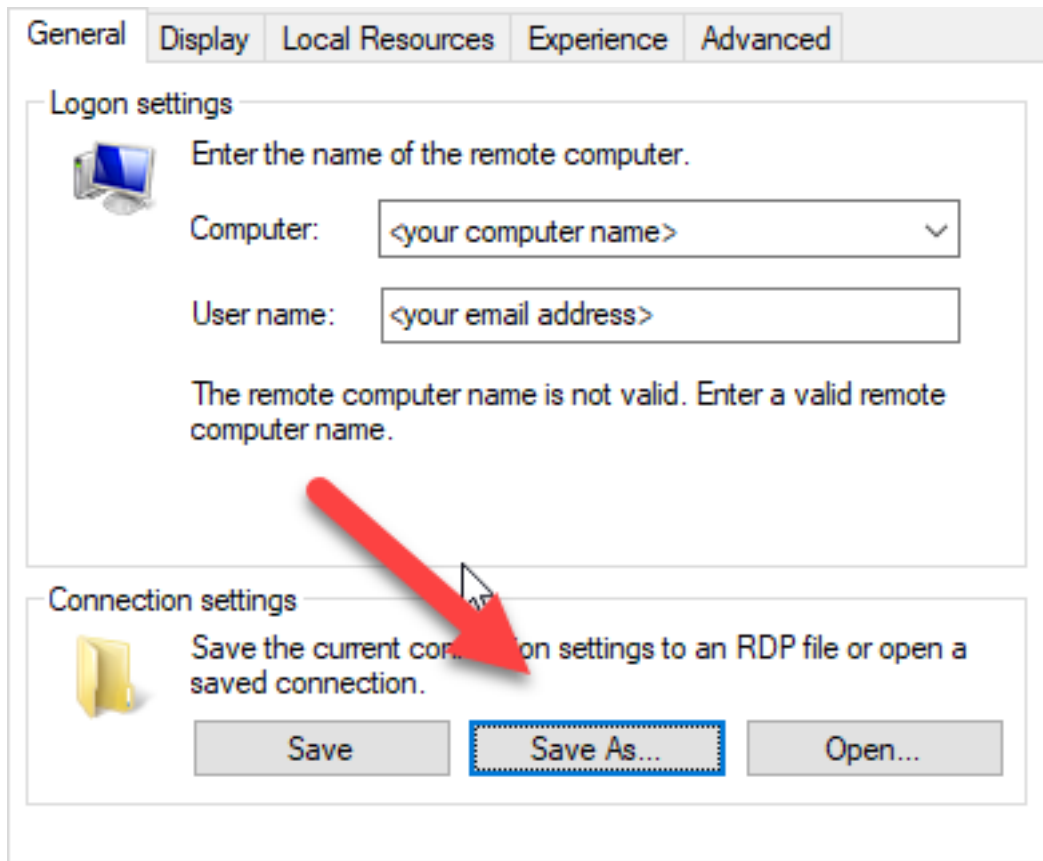
User name: None specified

You will be asked for credentials when you connect to this RD Gateway server.

☒ Use my RD Gateway credentials for the remote computer

OK Cancel

7. Back to the General tab, click on Save As.. and choose a good location and name!



8. That should be all that's needed to configure the remote desktop connection from scratch!

**The Support Team
Dynamic Computing, Inc.**

1011 Western Avenue, Suite 920 | Seattle, Washington 98104

Main: (206) 284-6200 | Toll Free: (855) 284-6200

service@dyncomputing.com

Custom Fields

- **Article Status:** Consultant Initial Publish

Online URL: <https://dyncomputing.knowledgebase.co/article.php?id=1210>